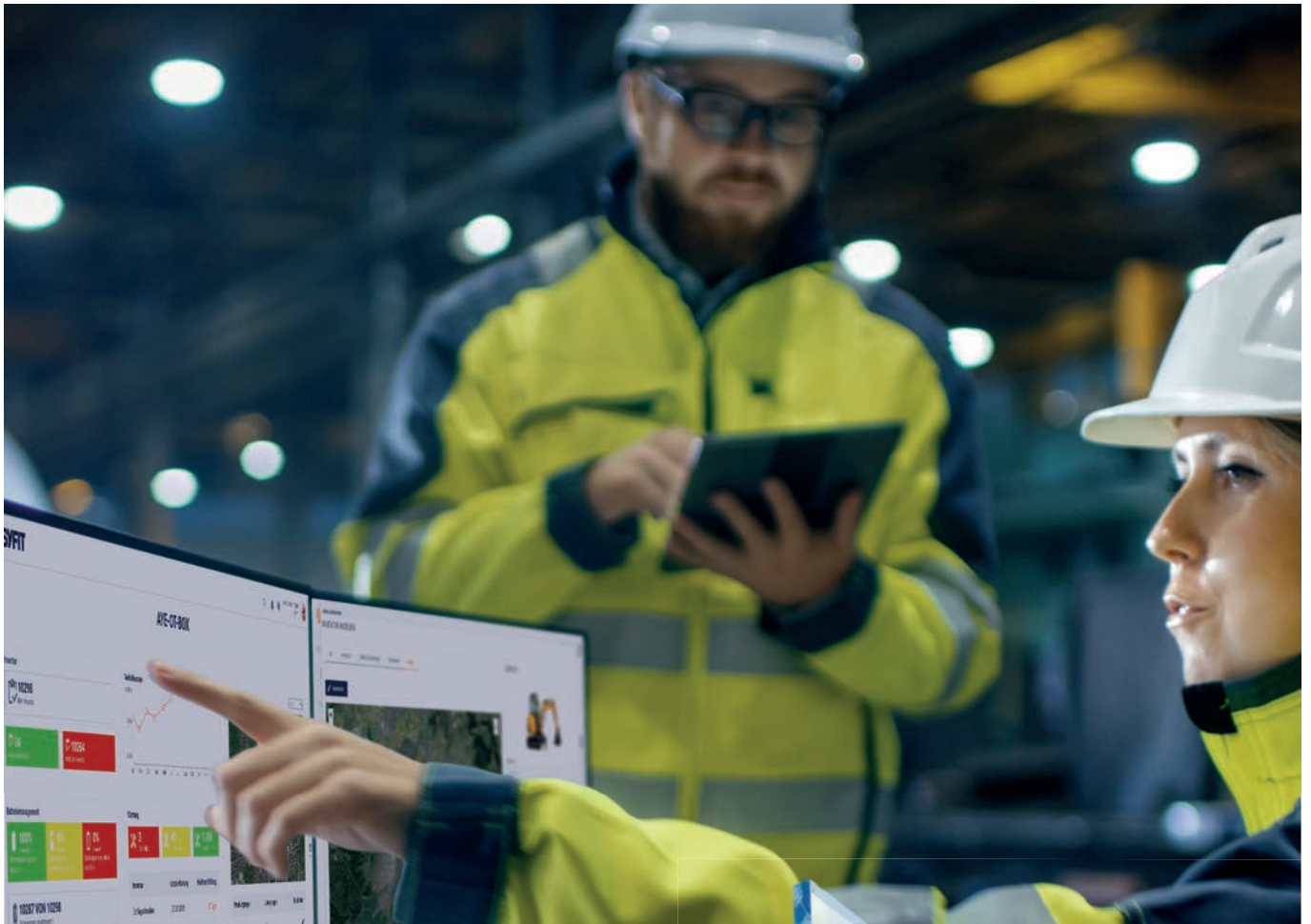


LOCALISE. TRACK. OPTIMISE.

TOOL MANAGEMENT



The Software-as-a-Service solution Tool Management offers an easy, cost-efficient cloud-based solution for the digital management and allocation of all tools, machines and equipment.



LOCALISE. TRACK. OPTIMISE.

TOOL MANAGEMENT

The Software-as-a-Service solution Tool Management offers an uncomplicated, cost-efficient cloud-based solution for the digital management and allocation of all tools, machines and work equipment.

Our solution supports you with:

- identification
- passive tracking
- administration
- inspection & maintenance
- organisation
- documentation & inventory of all tools, machines and equipment.



IMPORTANT FUNCTIONS



Inventory

- overview of the inventory
- permanent inventory



Location determination

- passive location determination (indoor/outdoor)
- Material search with mobile phone for every employee on the construction site
- Movement history



Digital material flow

- digital delivery note
- automated incoming and outgoing goods booking



Project Management & Reporting

- status message (in use / freely available)
- cost centre allocation
- data mining for rental invoices
- data mining on usage information
- data analysis sensor technology



Web & Mobil

- scalable SaaS solutions
- fast development of web and mobile applications.

Right technology for every use

Information

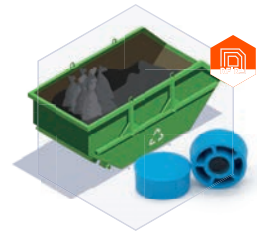
A smartphone acts as a gateway by reading the unique identification numbers of the RFID and NFC transponders and transmitting them to the web application.



Organisation



Asset / Item



The tool management works as follows:

- 1 Tools, machines and work equipment, as well as people and organisations, are equipped with RFID and NFC transponders, each of which has a unique identification number. These are then registered in the web application.
- 2 To obtain information about a specific person, area or organisation, all you need to do to scan their unique identification number using a smartphone or an RFID and NFC reader. You will receive information about the person, area or organisation and whether machines, tools or other equipment have been assigned to them.
- 3 The assignment of new machines, tools or equipment to a person, area or organisation is very simple: just scan the RFID and NFC transponders assigned to the items and they will be automatically assigned to the previously scanned area, person, etc.



RFID & NFC

NFC (Near Field Communication) and RFID (Radio-Frequency Identification) are wireless communication technologies that enable data to be exchanged between devices or objects over short distances.

Range: up to 10 millimetres

Implementation process



Your advantages

Cost reduction	Time saving	Security
<ul style="list-style-type: none"> cost reduction by reducing the risk of theft due to personal responsibility location-independent access to all information 	<ul style="list-style-type: none"> overview of the location of machines, tools and equipment significant reduction in search times thanks to quick location of objects reduction in unnecessary communication and enquiries 	<ul style="list-style-type: none"> future and investment security through technology openness data protection and data security through the use of modern data centers of Deutsche Telekom

SYFIT GmbH
 Gmünder Straße 13
 73430 Aalen/Germany

Phone: +49 (0) 7361 97387-00
 Mail: kontakt@syfit.de
 Web: syfit.de



Gerold Schnaidt
 Phone: +49 (0) 7361 97387-07
 Mail: gs@syfit.de

Svenja Vetter
 Phone: +49 (0) 7361 97387-08
 Mail: sv@syfit.de